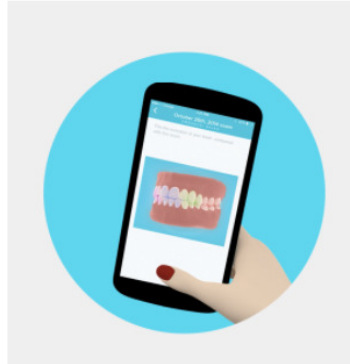


information for dental monitoring®



what is Dental Monitoring® ?

Dental Monitoring is your companion app for treatment success!

Based in France and used by orthodontic practices all over the world, Dental Monitoring® provides cutting-edge technology that we are proud to offer at The Ortho Practice. Your smartphone is now able to capture treatment evolution. You will use this app to take regular videos or 'scans' which are uploaded and analyzed in pixel detail. Not only will you receive updates and instructions through notifications sent by your doctor but you will also be able to visualize the evolution of your smile.

what are the benefits of Dental Monitoring® ?

- Doctors can see your treatment progression at a microscopic level.
- Allows doctors to remotely monitor and control your treatment progress, warning us of any changing conditions.
- Your orthodontic treatment can be completed faster, with more accuracy and more efficiently with fewer appointments required.

getting started

Before you commence treatment we will send you an activation email with login details and a link to download the app onto your device. These emails can be sent to up to 2 different email accounts.

start appointment

Once we issue you your aligners or put on your braces you have officially started your journey to a new smile!

We will also give you some retractors and a scan box and complete your very first Dental Monitoring® scan.

You will receive a notification (up to) 12 hours later from this initial scan. If you are an Invisalign patient, you will be advised on this occasion, to remain in your current aligners.

next scan

You will be notified 1 week later when you are due to take your next scan. After scanning (up to 12 hour later) with a progress update on your treatment.

Invisalign patients will also receive a follow up notification advising you to either change into the next aligners or remain in the current set. If you are advised to remain in your current aligners this is because your teeth are not quite ready for the next aligners. You will be asked to take another scan in the same aligners 3 days later so we can check this again and advise.

periodic scanning

During your treatment, you will continue scanning as instructed by Dental Monitoring®. We will see you for appointments when specified by the doctor.

It is critical to your treatment you take your weekly scan when prompted so the doctor receives necessary updates of your progress. If you fall behind with your scans your account may be suspended and you will need to attend more regular appointments at the practice so we can review your treatment.

messages from the doctor

You may receive some instructions through the app specific to your progress including changes in scan frequency or updates about your oral health.

**scanning tips**

- Leave the app open until the scan has finished uploading.
- Brush your teeth before scanning to minimize oral hygiene alerts and visit your general Dentist every 6 months.
- The app cannot be used in selfie mode.
- Check for app updates regularly through the app store so you are running on the latest version.

- Ensure you are connected to a strong wifi signal when taking and uploading your scans.
- You can download the app onto multiple phones and use the same login details for each device.

we're here to help

- As a Dental Monitoring® patient you have access to a dedicated email address that will ensure your queries are answered promptly by our practice.
- **dm@theorthopractice.com.au**
- Feel free to contact the practice directly if you have any queries or concerns with the app, your scans or any notification messages you receive.

resources / reference guides

- **downloading the app**
- Please refer to the activation email with the link to download the app for instructions.
- **scanning tips and tricks**
- Can be found in the Dental Monitoring® app on your smartphone, under FAQ.
- **Scanning Instructions**
- <https://www.youtube.com/watch?v=thZoSKe5EwI>
- <https://www.youtube.com/watch?v=y-q9Z8JMbzo>